

## Boy's Waistcoat Patterns

without sleeves

mid- 18<sup>th</sup> century

sizes 28/30, 32, and 34 inch chest

These patterns were drawn from original garments.

Size 28/30, XXVII, dated circa 1770, is shown in Norah Waugh's The Cut of Men's Clothes.

Size 32, CC17, dated to 1765-1790, is shown in Linda Baumgarten's Costume Close-Up.

Size 34, XXI, dated circa 1760, is shown in Norah Waugh's The Cut of Men's Clothes.

They were scaled to full-size by Reb Manthey.

These patterns do not include sewing instructions. You can make them using 18<sup>th</sup> century techniques, modern techniques, or a combination.

### Materials Needed:

Main Fabric: Light to medium weight wool, or medium weight linen.

Lining Fabric: Light to medium weight linen.

Pre-shrink fabric and lining as necessary.

	Size 28/30 inch chest <u>pattern XXVII</u>	Size 32 inch chest <u>pattern CC17</u>	Size 34 inch chest <u>pattern XXI</u>
Main Fabric:	7/8 yd 60" wide or 1 3/4 yd 45" wide	7/8 yd 60" wide or 1 3/4 yd 45" wide	1 yd 60" wide or 2 yd 45" wide
Lining:	same as above	same as above	same as above
Interfacing:	3/4 yd	3/4 yd	7/8 yd
Buttons: 5/8-3/4"	10-13	12	10-11
Sewing Thread, Buttonhole Thread			

Copyright Reb Manthey, 2021. You may copy and distribute this pattern for personal use.

[colonialmainelivinghistoryassn@gmail.com](mailto:colonialmainelivinghistoryassn@gmail.com)

### Before You Cut:

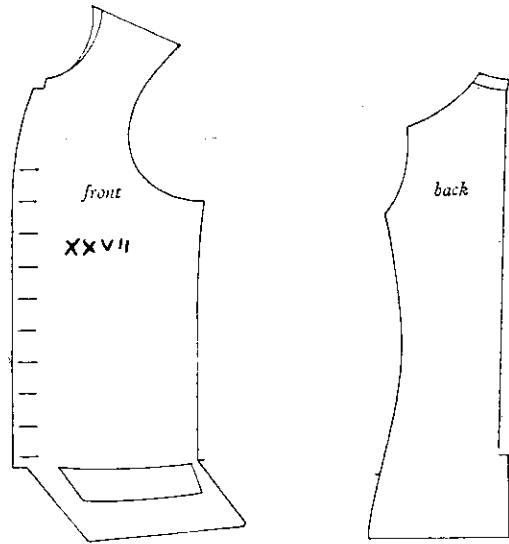
1. These patterns include 2 to 4 inches of ease, meaning they fit fairly closely to the body. If the wearer prefers somewhat looser-fitting clothes, or if he is growing quickly, you may wish to use the next larger size.
2. Shortening the Patterns: These patterns fit tall men; to fit boys or average-height men, they need to be shortened. Remove 2 to 3 inches, or use the boy/man's actual measurements. Follow the pattern markings. If you alter the length of the pattern, you will need to re-space the buttons and buttonholes.
3. Altering Pattern CC17: This pattern fits a man with a pot-belly; to fit an average size boy/man, make the waist smaller by cutting along the "alternate cutting line" shown on the pattern. You will then need to move the buttons and buttonholes, and maybe the pocket flaps.
4. Neckband: Pattern XXVII has a neckband cut on the straight grain. You may instead make a neckband cut on a curve, or omit the neckband. You may add a neckband to the other patterns. Or you may bind the neck edge.
5. Lining: These patterns use a full lining; you may instead make a partial lining.
6. Pockets: You may add real pockets.

### Other Options:

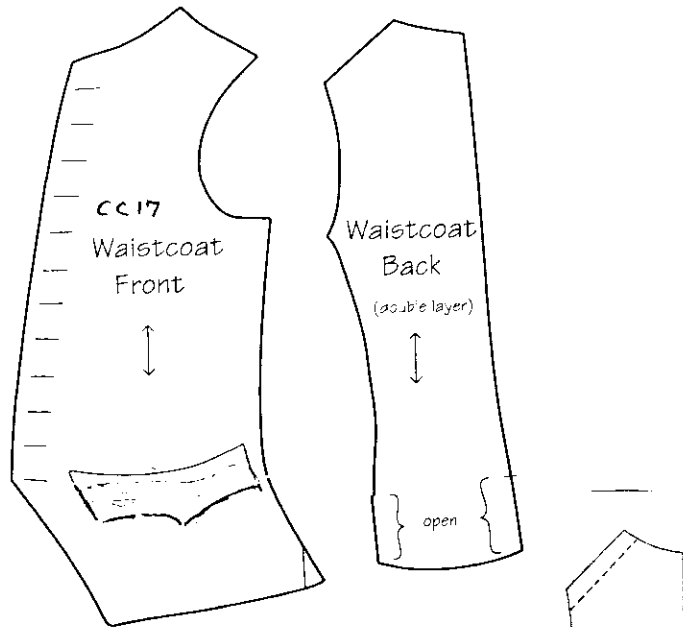
1. Depending on the fabric and buttons, you may put the buttonholes and buttons closer to the edge of the garment.
2. The buttonholes and buttons can start at the top edge, or a few inches lower.
3. You may add real or decorative buttonholes and buttons to the pocket flaps.

BOYS/MANS WAISTCOAT  
 PATTERNS  
 LATE 18<sup>th</sup> CENTURY

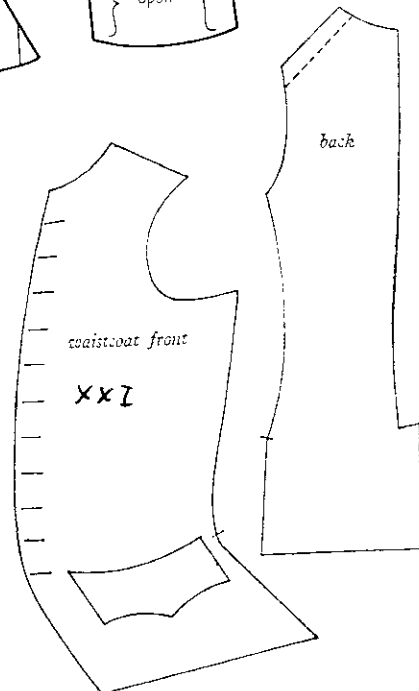
XXVII  
 size 28/30" chest  
 circa 1770  
 (Norah Waugh)



CC17  
 size 32" chest  
 circa 1765-1790  
 (Bavmgarten)



XXI  
 size 34" chest  
 circa 1760  
 (Norah Waugh)



-24  
 3/2023