

Curtis Sleeved Waistcoat Pattern

c. 1778

size 34/36 inch chest

This pattern was drawn from an original garment belonging to the Connecticut Historical Society, dated circa 1778. It was examined and drawn to scale by Henry Cooke of Historical Costume Services. These drawings were scaled up to full size by Reb Manthey.

This pattern does not include sewing instructions. You can make it using 18th century techniques, modern techniques, or a combination.

Materials Needed:

Main Fabric: Light to medium weight wool, or medium weight linen. 54-60 inches wide.

Lining Fabric: Light to medium weight linen. 54-50 inches wide

Pre-shrink fabric and lining as necessary.

Size 34/36 inch chest

pattern Curtis

Main Fabric: 1 3/4 yd

Lining: same as above

Interfacing: 7/8 yd

Buttons: 3/4" to 1" 12-14

Sewing Thread, Buttonhole Thread

Copyright Reb Manthey, 2021. You may copy and distribute this pattern for personal use.
colonialmainelivinghistoryassn@gmail.com

Before You Cut:

1. This pattern includes 2 to 4 inches of ease, meaning it fits fairly closely to the body. If the wearer prefers somewhat looser-fitting clothes, or if he is growing quickly, you may wish to use the next larger size.
2. Shortening the Pattern: This pattern fits a tall man; to fit boys or average-height men, it needs to be shortened. Remove 2 to 3 inches, or use the boy/man's actual measurements. Follow the pattern markings. If you alter the length of the pattern, you will need to re-space the buttons and buttonholes.
3. Lining: This pattern uses a full lining; you may instead make a partial lining.
4. Pockets: You may add real pockets.

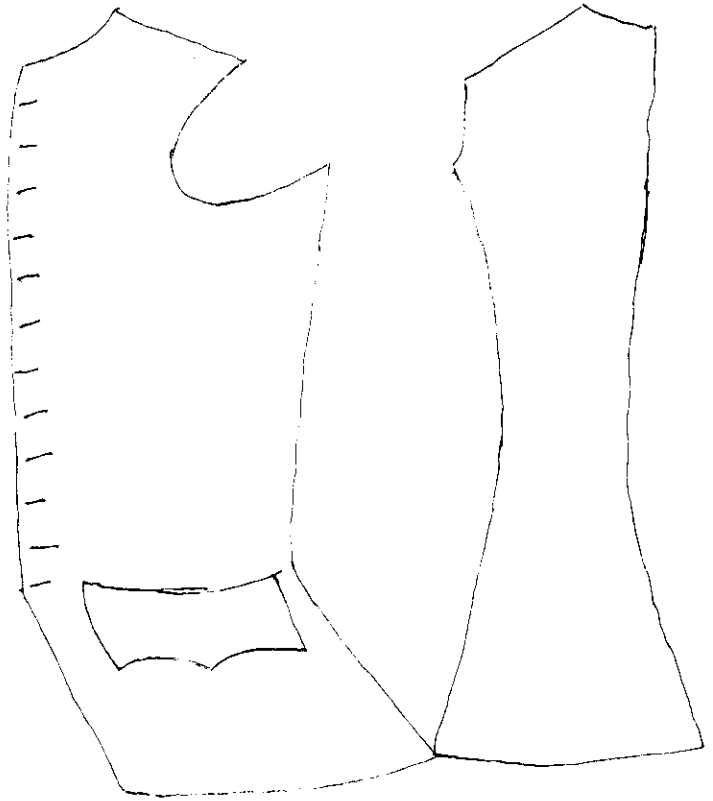
Other Options:

1. Depending on the fabric and buttons, you may put the buttonholes and buttons closer to the edge of the garment.
2. The buttonholes and buttons can start at the top edge, or a few inches lower.
3. You may add real or decorative buttonholes and buttons to the pocket flaps.

SLEEVED WAISTCOAT
OF H.T. CURTIS
C. 1778

CONNECTICUT HISTORICAL
SOCIETY
& HENRY COOKE

Fits chest 34/36"



- ~~RM~~ 3/2023

